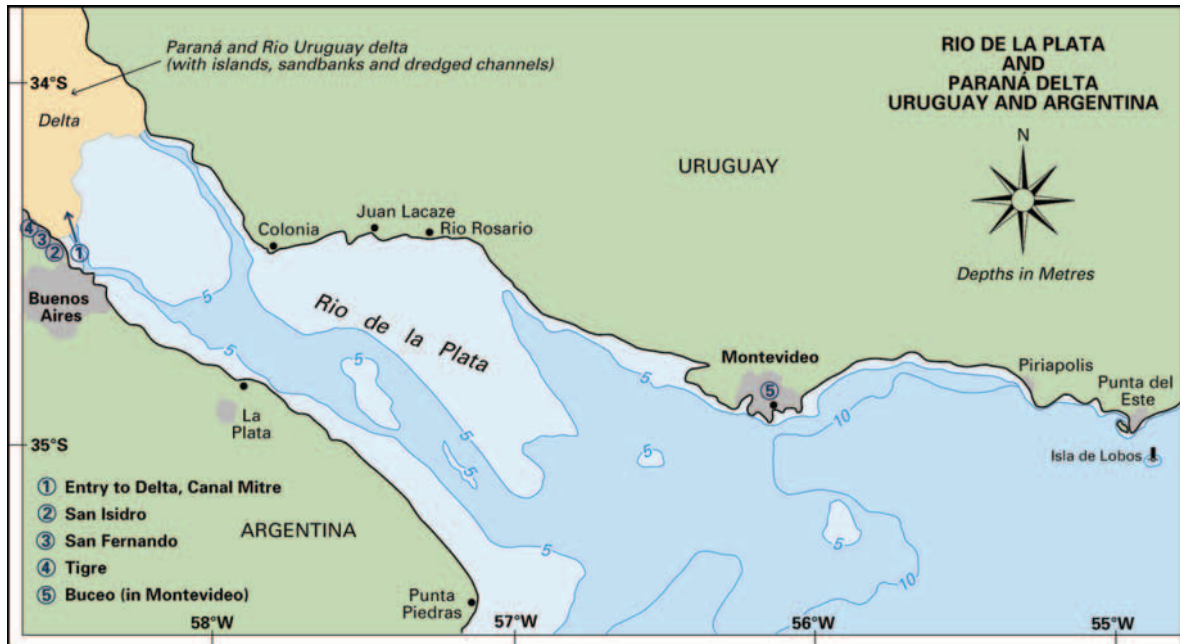


3. RIO DE LA PLATA (RIVER PLATE), PARANÁ DELTA



The brown waters of the Rio de la Plata are notoriously tricky for sailing. They are very shallow with rapidly changing, unpredictable weather that can build a nasty short sea very quickly in bad weather and cause water levels to fluctuate dramatically regardless of the tide. There are also shifting shoals, unmarked wrecks and other hazards, excessive numbers of navigational aids and plenty of shipping. Sail here with care and attention. On the Argentine side, the city of Buenos Aires, the Paraná delta and the city of La

Plata (Ensenada) can be visited. You can contact the Prefectura in Buenos Aires, call sign L2G (Lima dos Golf) to announce your arrival and to get weather information.

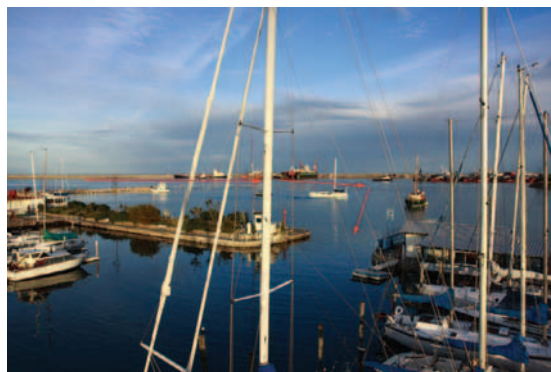
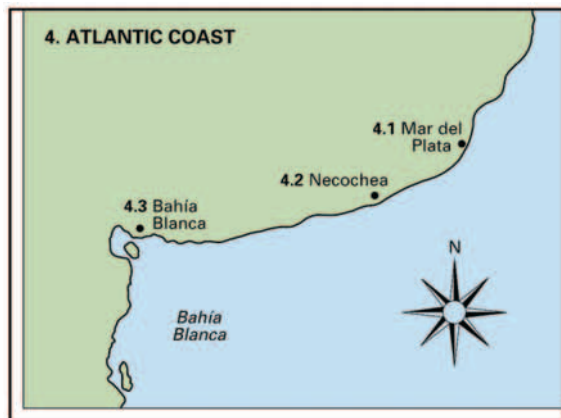
Yacht entering the inner harbour of YCA
Andy O'Grady



Buenos Aires from the Rio de la Plata
Andy O'Grady



4. ATLANTIC COAST



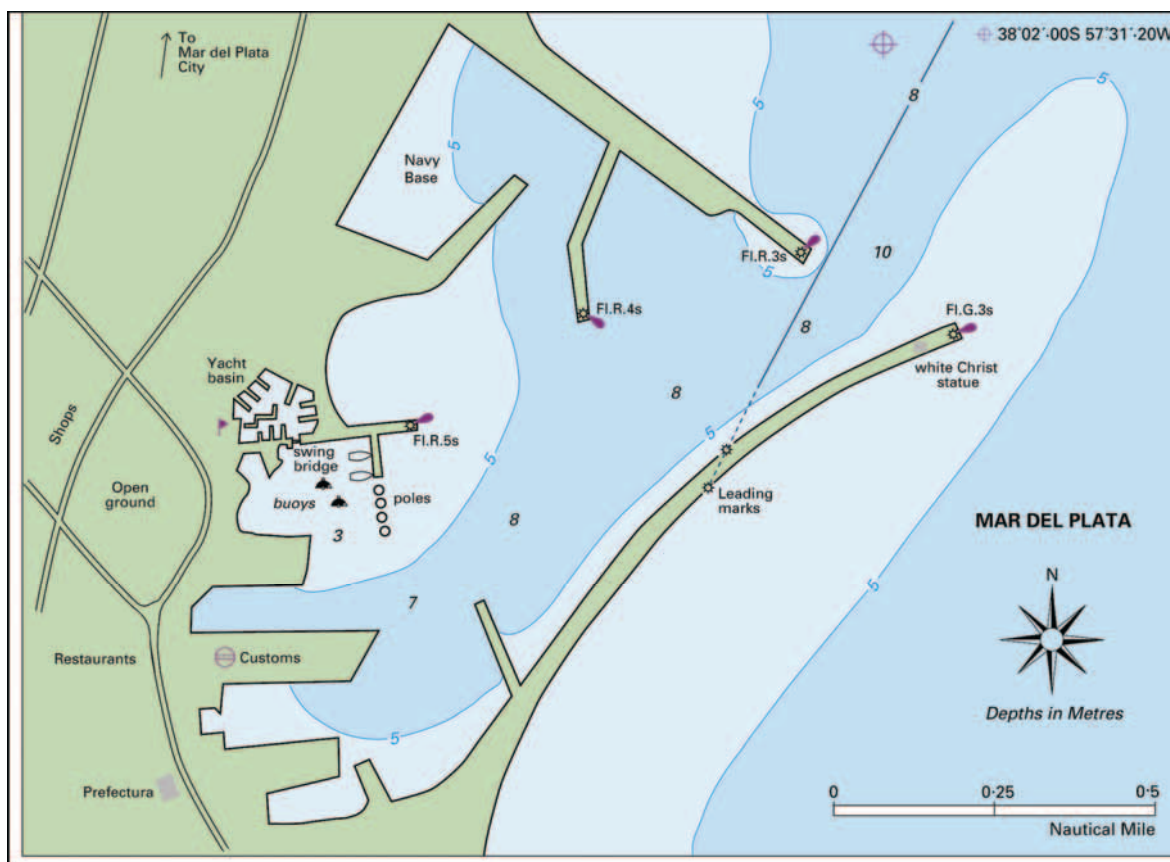
Marina - Mar del Plata
Andy O'Grady

4.1 MAR DEL PLATA

38°02'S 57°32'W

Charts: H-114, H-210, H-250, H-251, GB3065

Prefectura call sign: L2U



ATLANTIC COAST